

Quick Start Guide

Press power switch to switch on microscope. Wait 20 seconds until blue light flashes. Hinge the mast up.

iPhone and iPad:

1. Download and install the ioLight app from the App Store
2. Connect iPhone / iPad to ioLightxxxxxx WiFi network
3. Start the ioLight app

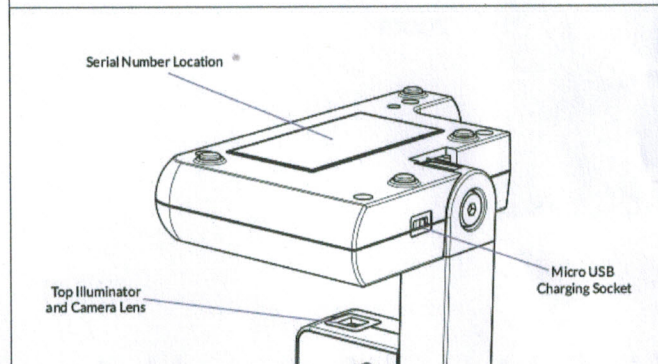
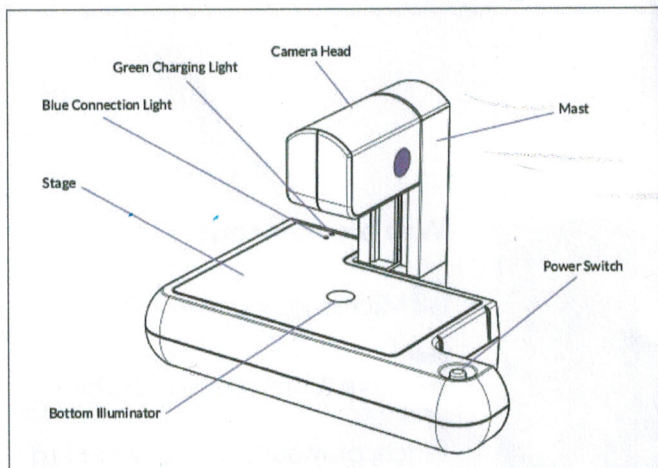
Android:

1. Download and install the ioLight app from the Play Store
2. Start ioLight app & follow the on-screen instructions to connect to the microscope's WiFi network
3. Your device may tell you that there is no internet available on the iolightxxxxxx network, if it does, choose 'Stay connected to this network'
4. Wait a few seconds for live image from the microscope

Web Browser:

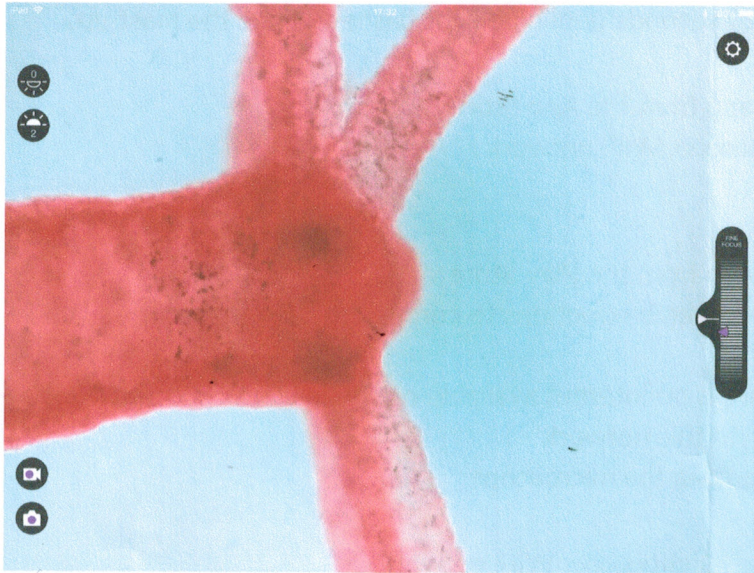
1. Connect your device's WiFi to the iolightxxxxxx WiFi network
2. Open a web browser and type the address 192.168.1.1 into the URL bar

- Switch on top and / or bottom illuminators using the onscreen controls
- Place sample on stage above the base illuminator
- Slide head down to focus the image:
 - a. **1mm microscope:** the head needs to be 1mm above the sample
 - b. **2mm microscope:** the head needs to be 2.5mm above the sample
- Adjust fine focus using 'thumb wheel' on screen
- Save a high quality image by pressing the camera icon on screen – the images are saved to your photos app or in your web browser's downloads directory
- Switch microscope off - press and release the power button on microscope. NOTE: it takes 10 sec for the microscope to switch off and the blue light to go out






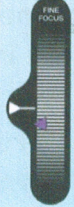


Blue connection light	Continuously lit	Microscope is starting up or shutting down. Or microscope is streaming live images to a device
	Flashing	Microscope is on and ready to stream live images to a device
	Flashing long-short-long	Microscope battery is <20%
	Flashing fast	Microscope is in recovery mode (see trouble shooting)
Green Charging light	On	USB charger is connected and battery is charging
	Off	Battery has finished charging or no USB charger is connected
Power Switch	Switch on	A short press switches the microscope on. <i>Note: after pressing the power switch it takes approx. 20sec for the blue light to start flashing which signifies that the microscope is now on and read to use.</i>
	Switch off	A short press switches the microscope off. <i>Note: switch off takes approx. 10secs then the blue light goes out</i>

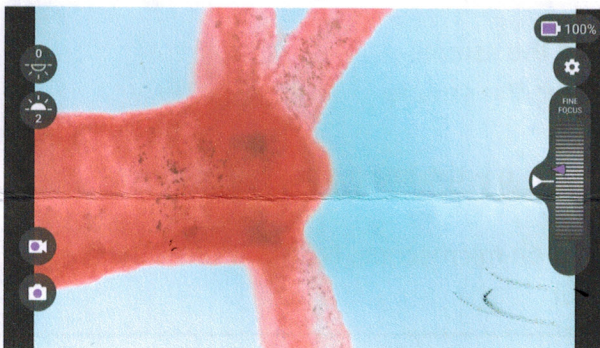
iPhone / iPad app




All apps:

-  Illumination from above sample
-  Illumination from below sample
-  Save image
-  Record video
-  Settings menu (scale grid & power off)
-  Fine focus. Tap the white triangle on the left hand side of the fine focus thumb-wheel to centre focus

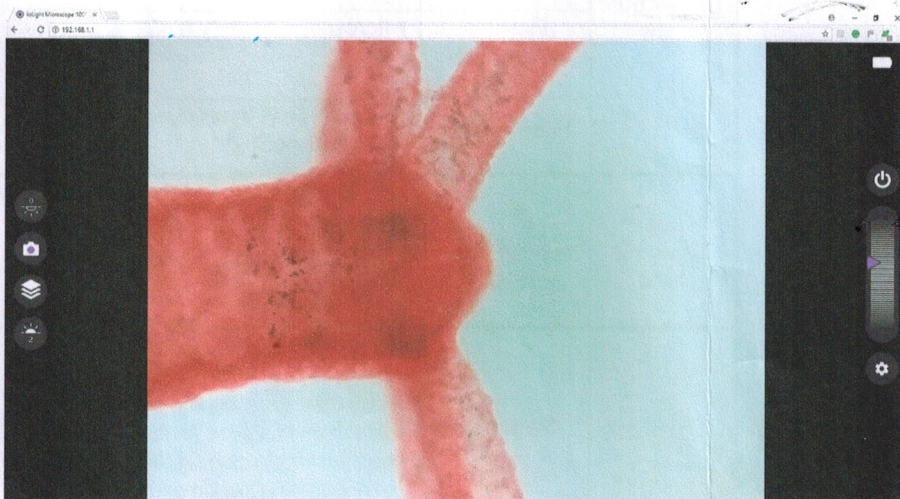
Android app





Android only:

-  100% Microscope battery charge level
- Pinch on image to zoom

Web Browser



Web browser only:

-  Microscope power off
-  Save 12 images for Z-Stack
- Pinch, or mouse thumb wheel to zoom